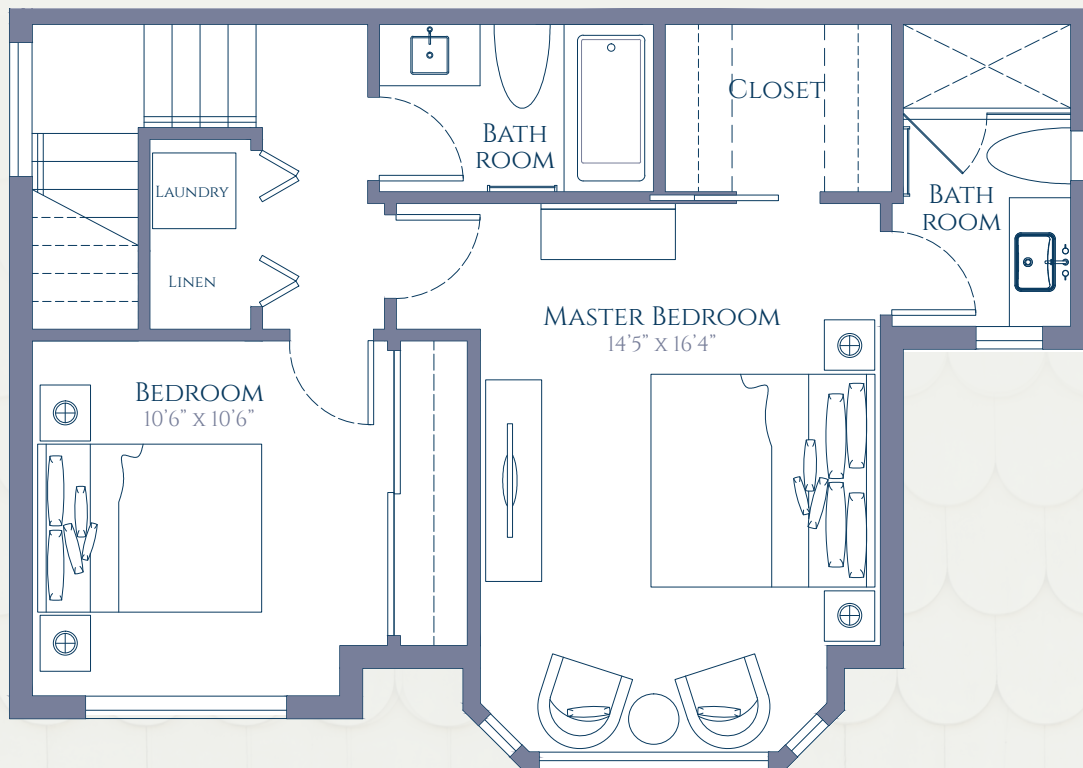


# THE PATH HOUSE | 121 WEST 14<sup>TH</sup> AVE

*This home radiates the notion of open concept. It's functional, trendy and bright. Three large bedrooms, three and a half exquisitely designed bathrooms, and a chef inspired kitchen compliment the high ceilings and custom millwork. The garden level has private entry, a functional flex room with a wet bar, and a massive third bedroom. It has brilliant curb appeal with its fully manicured private front garden. This home is great for the avid gardner and outdoor entertainer.*

*The front unit comes with a dedicated private garage.*

## 121 WEST 14<sup>TH</sup> AVE - MAIN HOUSE - TOP FLOOR PLAN



### THE PATH HOUSE

Main Floor	563 sq ft
Top Floor	551 sq ft
Basement	574 sq ft
Garage	171 sq ft

TOTAL 1,859 SQ FT

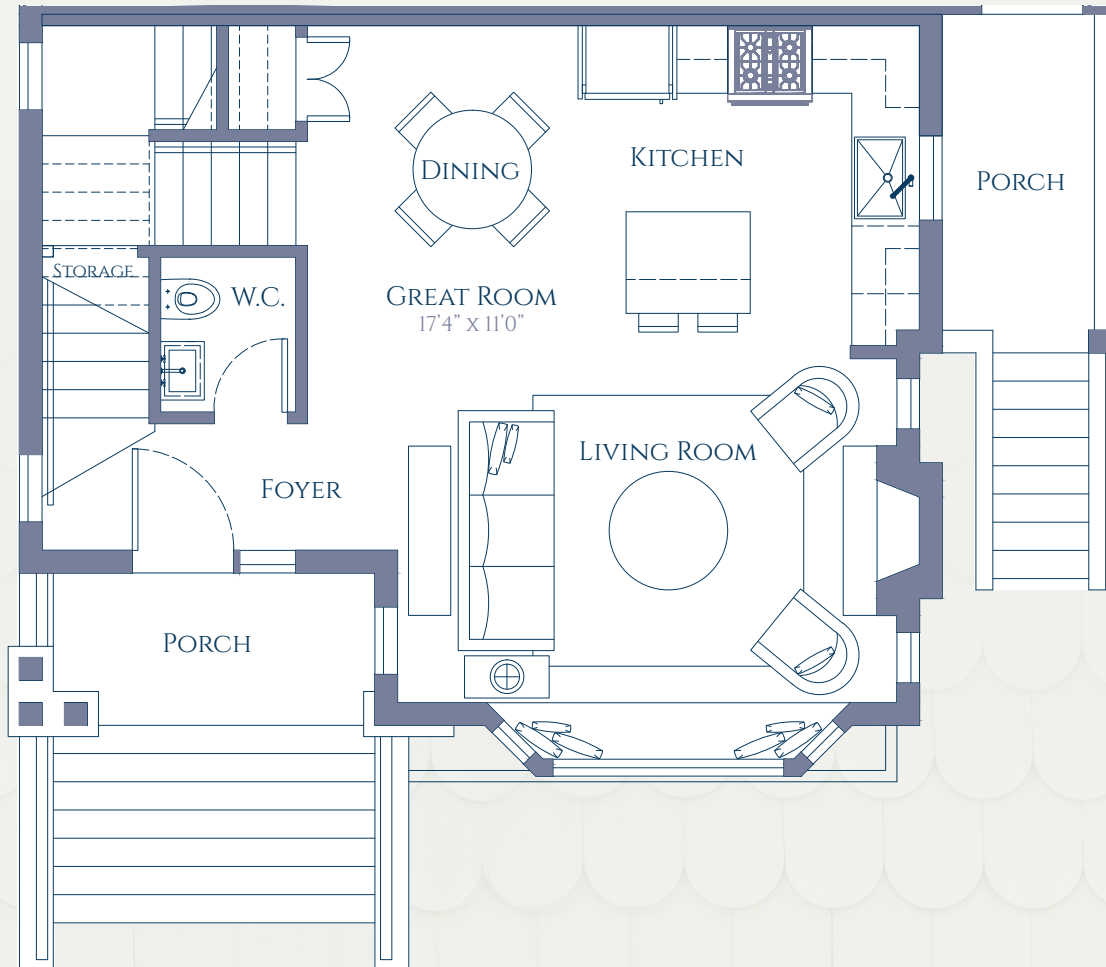
Porch	41 sq ft
Patio	90 sq ft



MOUNT PLEASANT A PLACE TO CALL HOME

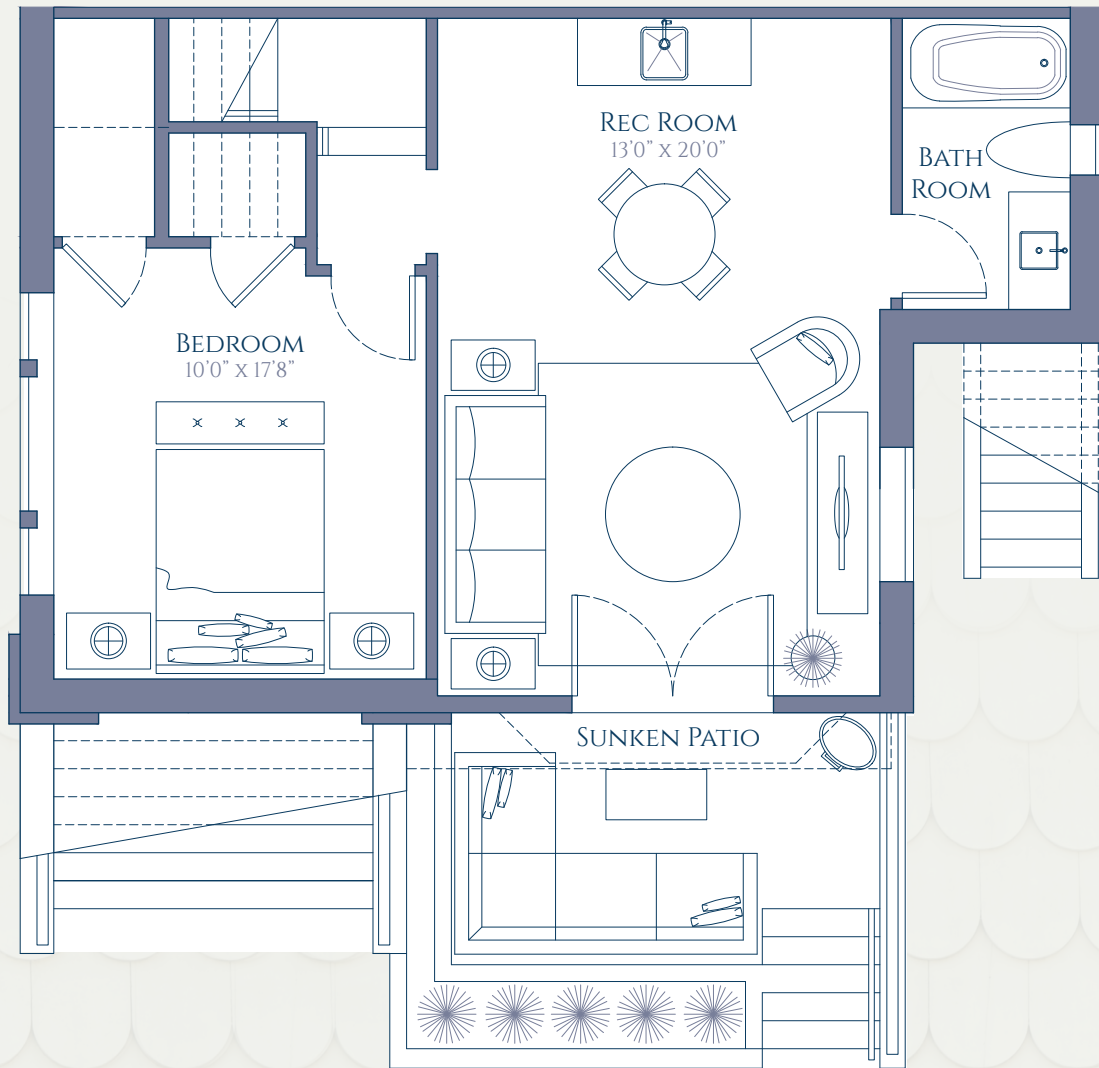
REGISTER NOW | [www.TheBromley.ca](http://www.TheBromley.ca) | 604-636-1926

121 WEST 14<sup>TH</sup> AVE - PATH HOUSE - MAIN FLOOR PLAN



MOUNT PLEASANT A PLACE TO CALL HOME

121 WEST 14<sup>TH</sup> AVE - PATH HOUSE - BASEMENT FLOOR PLAN



MOUNT PLEASANT A PLACE TO CALL HOME